



2013-2014 Reflections Student Artwork, UT



2015 - 2016 Visual Arts Category Updates

- Options for State Program Expansion
- National Submission Requirements
- Art Form Identification

Options for State Programs: National PTA will still accept only 1 Visual Arts entry from each division.

A. States without 3D Visual Arts: Expand category to welcome 3D entries OR continue without 3D and only offer 2D Visual Arts.

B. States with existing 3D Visual Arts Categories: Keep 2D and 3D categories separate and advance the entry with the highest score OR integrate 2D and 3D categories.

Judging Tips: All entries are to be reviewed by judges with formal experience/training in a variety of visual art forms.

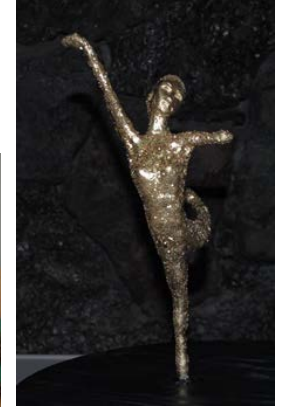
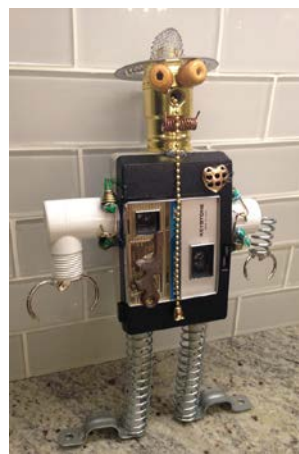
- Similar to a music composition judge who may be well versed in composing for vocal and instrumental ensembles.
- Similar to a dance choreography judge who may be well versed in choreographing for a single performer and for groups of performers.



2D Forms: Architectural drawing, collages, photographic collages, computer-generated image, drawing, painting, printmaking.

- Dimensions must not exceed 24x30 inches, including matting.
- Paper entries must be mounted on sturdy material.

Images of Reflections Student Artwork



3D Forms: Architectural model, carpentry, ceramics, design, dioramas, fiber work, jewelry, kites, metal etching/punch work, mobiles, sculpture and wind chimes.

- Artwork must be able to move for display purposes.
- Must include packaging materials and 3 photos of the entry (a combination of angles) for judging, ID and exhibition purposes (entries that require assembling/repairing from transporting will be disqualified).

Images of Reflections Student Artwork provided by Jean Irwin, Reflections Committee Member

Photographic Collage vs. Photomontage

What is it? What category is it? Why?



Photographic Collage = many photo prints pasted on to a flat surface.

Reflections Student Artwork
by Brynn Grambow, NH



Photomontages = 1 seamless print of multiple original photos. Produced digitally using photo editing software.

Reflections Student
Artwork by Kobie Long, IA



Computer Generated Image vs. Digital Photos

What is it? What category is it? Why?



Computer Generated Image = image created from scratch using computer software.

Computer Generated Image by Wikipedia



Digitally Edited Photo = image created from original photo(s).

Reflections Student Artwork by Hannah Shoultz, VA

